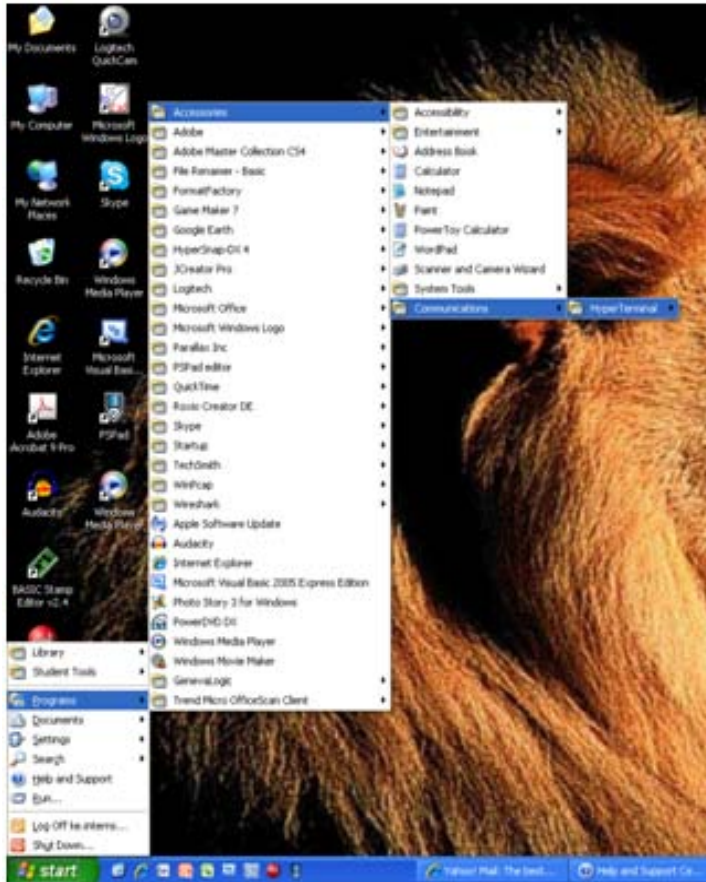


HyperTerminal

What is Hyperterminal?

This is a program featured on an XP computer that allows you to connect to a switch, in this case we were using an HP 4000 switch. It allows you to edit the settings on that switch, such as the IP address, what ports are going to be on/off.

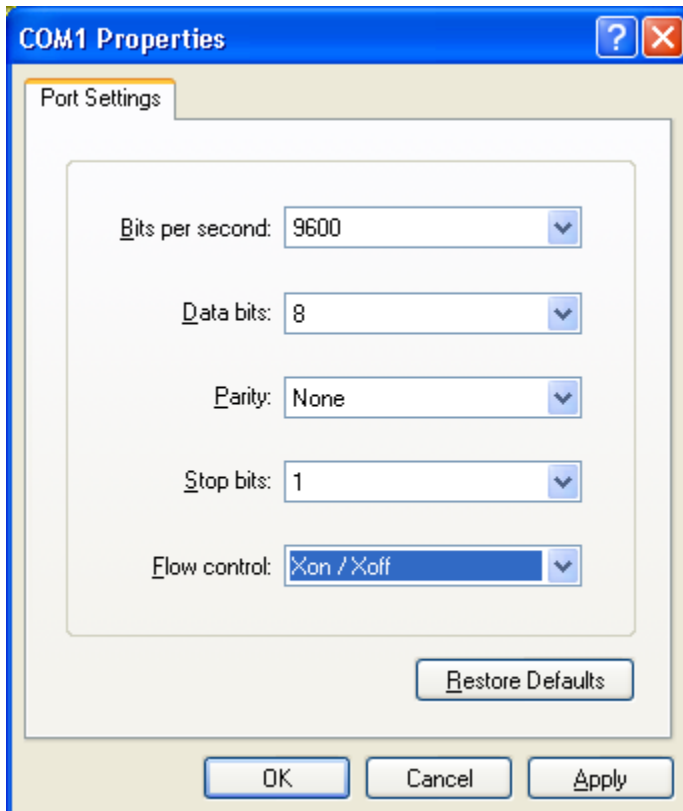


- 1) Find HyperTerminal application on your windows setup by start->programs->accessories->communications->HyperTerminal

- 2) Start Connection... name your connection

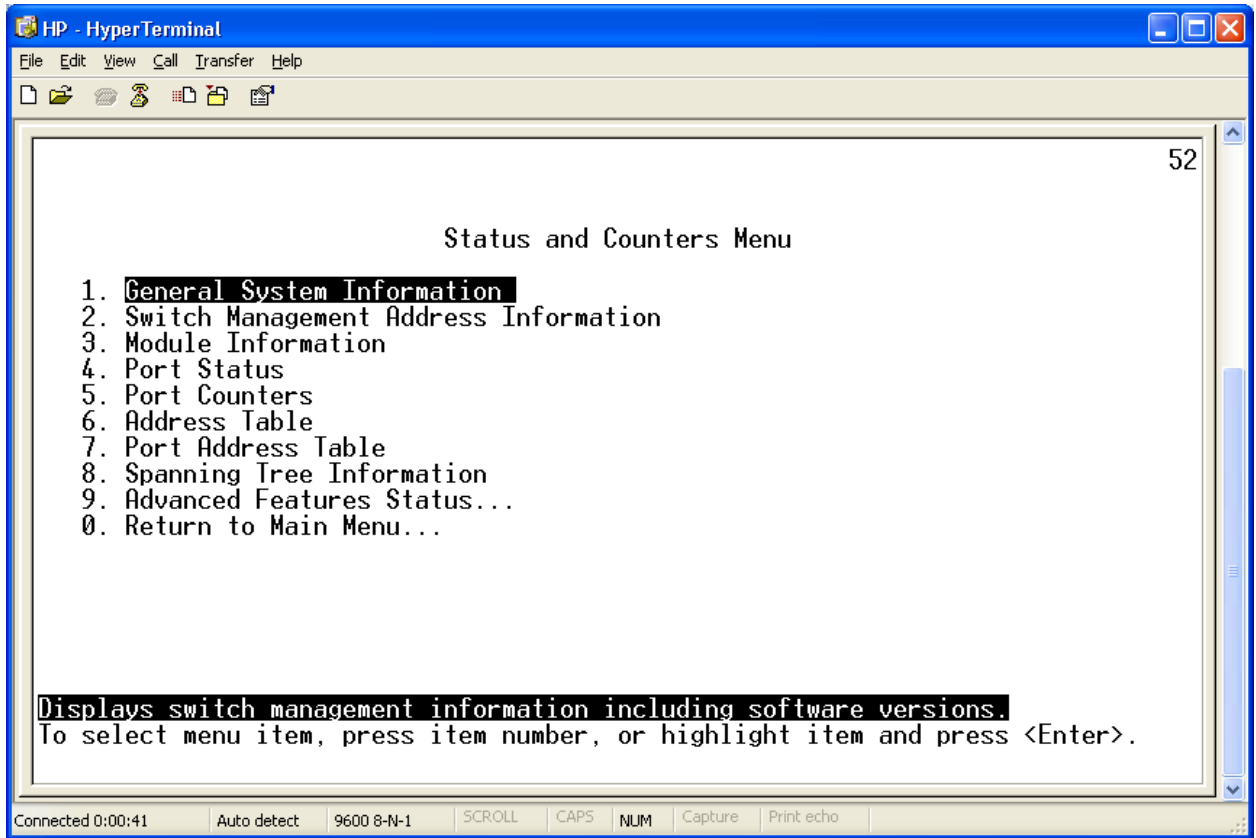


- 3) Use COM1 port
- 4) Enter Properties (9600 baud rate, Xon/Xoff Flow control)



- 5) Connection should be automatic, hit enter twice when told, setup is complete.

6) Screen should look like:



Basic options

Port Status – See if a port on the switch is activated and operational or has a cable attached.

General System Information – Basics of the switch: IP, Mac, packet amount